



# CARGO TRAILER SERIES

**-transform your hauling experience-**



[www.weberlane.com](http://www.weberlane.com)



# ESTATE & CONTRACTOR SERIES STANDARD SPECIFICATIONS

## ESTATE

- Single or Tandem 3500 lb 4" Drop Spring Axle
- 205x15 Radial Tires
- Z-Style Side Posts on 16" C
- Floor and Roof Crossmembers 24" Center
- 3" Trims
- 1/4" Panelling Interior Lining
- 32" Side Man Door
- Screwless Exterior
- Wedge Nose
- 1 Piece Aluminum Roof
- 3/4" Marine Grade Flooring
- 2-5/16" Ball Coupler
- LED Lighting
- 2000 lb Jack
- Framed for Roof Vent
- Electric Brakes on 2 Axle on Tandem Models



## WEBERLANE ENCLOSED CARGO TRAILERS

Known for their quality components and durable build. All steel trailers are fully powder coated for better protection against rust. The Weberlane line is ideal for contractors and landscapers who are looking for an enclosed trailer, a cut above the rest to ensure peace of mind when they're out on the road on a daily basis.



Shown with blackout package

## CONTRACTOR

- Single or Tandem 3500 lb 4" Drop Spring Axle
- 205x15 Radial Tires
- Tubing Side Posts on 16" C
- Floor and Roof Crossmembers 16" Centers
- 3" Trims
- 3/8" Interior Lining
- 32" Side Man Door
- Screwless Exterior
- Wedge Nose
- 1 Piece Aluminum Roof
- 3/4" Marine Grade Flooring
- 2-5/16" Ball Coupler
- LED Lighting
- 2000 lb Jack
- Framed for Roof Vent
- Electric Brakes on 2 Axle

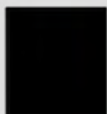
"Create your own **STYLE** of trailer with the customizable options we have to offer."



WHITE



BLACK



RED



ORANGE



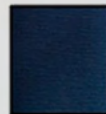
YELLOW



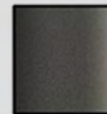
GREEN



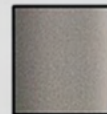
INDIGO BLUE



CHARCOAL



PEWTER



SILVER

