



OVER 250 MODELS AVAILABLE



WLHDT SERIES Rock Dumpers

IMPORTANT

Read this manual before operation

WEBERLANE TRAILER MANUFACTURING

CONTENTS

Introduction 2

Important 2

Safety Features 2

Warranty 3

Recommendations 4

Warnings 4

Hydraulic Hoses 5

Grease Points 6

Parts Breakdown 7-20

Tire Maintenance 21-23



INTRODUCTION

Weberlane Manufacturing takes this opportunity of thanking and welcoming you as the owner of a Weberlane Trailer.

We want your trailer to be the most efficient and productive piece of equipment you have. This small manual will help you to achieve this objective.

The correct parts and maintenance of your machine is very important to prevent downtime and equipment damage.

Please take special note of the Recommendations and Warnings on page 4 and the Operation Instructions on pages 5-9.

Correctly maintained and operated this machine will give many years of service. If you have any questions or concerns please contact the dealer who supplied you this machine. They have trained technicians who will be able to help you.

IMPORTANT

- Please ensure this booklet is read and understood by every person who will be operating this machine.
- Also ensure that this booklet goes with the machine if it is resold and that it is read and understood by the new owner.

SAFETY FEATURES

1. Make sure safety chains are securely fastened before towing trailer.
2. Do not exceed axle limit when hauling large loads.
3. All safety latches and hooks should be fastened before moving trailer.
4. Trailer should be attached to a tractor or truck when loading and unloading.
5. Do not allow passengers to ride on/in trailer for any reason.
6. When attaching to tractor, be sure all persons are out of the way of vehicle.
7. All trailer lights need to be working properly.

WARRANTY

Weberlane warrants new products sold by us to be free from defects in material and workmanship up to 12 months after delivery to the initial user. This warranty is for the replacement or repair of any part found to be defective during the warranty period. Replacement parts provided under the terms of this warranty are covered for the remainder of the warranty period applicable to the product in which they are installed as if such parts were original components of the product.

Weberlane expressly disclaims any responsibility for damages to the trim and appearance items located in or on the unit where damage is due to condensation, normal wear and tear, or exposure to the elements. Weberlane makes no warranty with regard to tires, tubes, batteries, brakes, routine maintenance, equipment and appliances which show signs of normal wear and tear. Some of these items may be warranted by their respective manufacturers and suppliers. All warranty information with respect to these items is available from your dealer.

The sole responsibility of Weberlane Manufacturing under this limited warranty shall be to repair and replace parts at the Weberlane Manufacturing factory, or at a Weberlane Manufacturing authorized dealer or facility with prior written approval by Weberlane. All other obligations or liabilities, including incidental or consequential damages or contingent liabilities arising out of the failure of any parts to operate properly, are hereby excluded but not limited to any general or specific, foreseen or unforeseen, unless applicable provincial law provides otherwise. Weberlane will not reimburse any claimant for any adjustment or repair of a Weberlane trailer without prior written approval by Weberlane.

Weberlane Manufacturing is not responsible for damages caused by accidents, negligence, abuse, misapplication, or misuse of a trailer or any of its component parts. Loading in excess of gross vehicle load ratings stated on the certificate will invalidate any and all warranties. Any modifications, alterations, or repair to any product manufactured by Weberlane without Weberlane's prior knowledge and consent will void manufacturer's warranty.

RECOMMENDATIONS

We strongly recommend that you periodically inspect the entire machine for any premature wear. If you spot any cracks or fractures in the steel or welds, please contact Weberlane immediately.

Ensure that all major bolts are checked before the first use of this machine and checked for tightness every 6 months after purchase, then annually moving forward after the first year of operation.

Wheels must be torqued to manufacturing specification upon receipt of this machine. Wheel torque must be checked frequently, see chart for wheel torque specifications. For specification on all models see page 33 in this manual.

SIZE	TYPE	GRADE	LUB. FT/LBS	DRY FT/LBS
3/4" - 16K	WHEEL NUT	8	220 MAX	290

Clean the exterior of your trailer as you would clean your vehicle. Use only gentle soap and water to avoid any damage to the paint job.

WARNINGS

To operate this machine on the open road it must comply with North American towing regulations. To operate this machine in other off-road operations it must comply with farm safety regulations.

Do not operate while standing in or close to the machine or it's moving parts. Do not make any adjustments while the machine is operating. Beware of surroundings when operating this machine to prevent injury to personnel and to prevent damage to this machine.

HYDRAULIC HOSES

When you receive your new machine, you will notice on the hitch that there are a bunch of hydraulic hoses zip-tied together. Each hose has a coloured tag on it which represents the function of the hose. The machine has a colour coded sticker (see *figure 1*) that will be on the front plate of the bucket. Please use this sticker to identify the function of each hose. For example; the hose with the red tag is for the brakes, the hose with the green tag is for the tailgate, and so on.

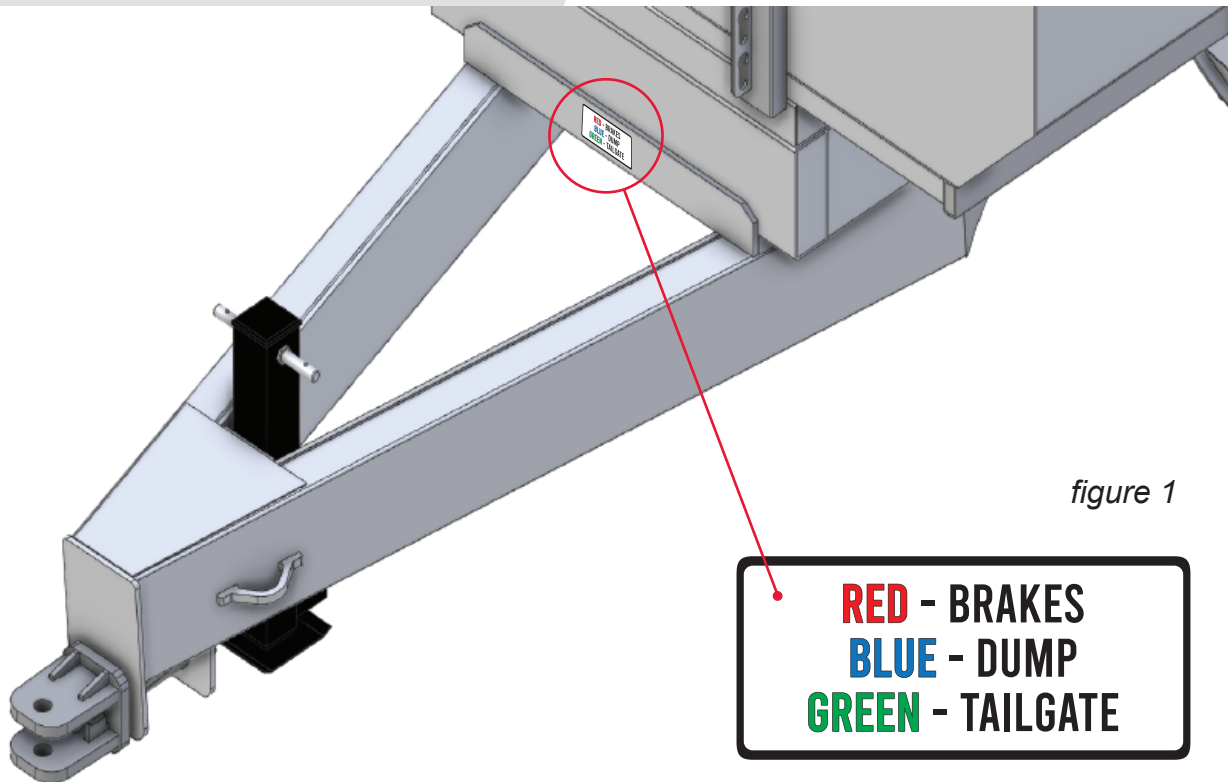


figure 1

When hooking up the hydraulic hoses to your tractor you must:

1. Make sure that the tractor is turned off
2. Match each hose with its function by using the colour coded sticker
3. Plug each hose into it's corresponding spot on the tractor
4. Test everything to ensure that each function is operating properly

GREASE POINTS

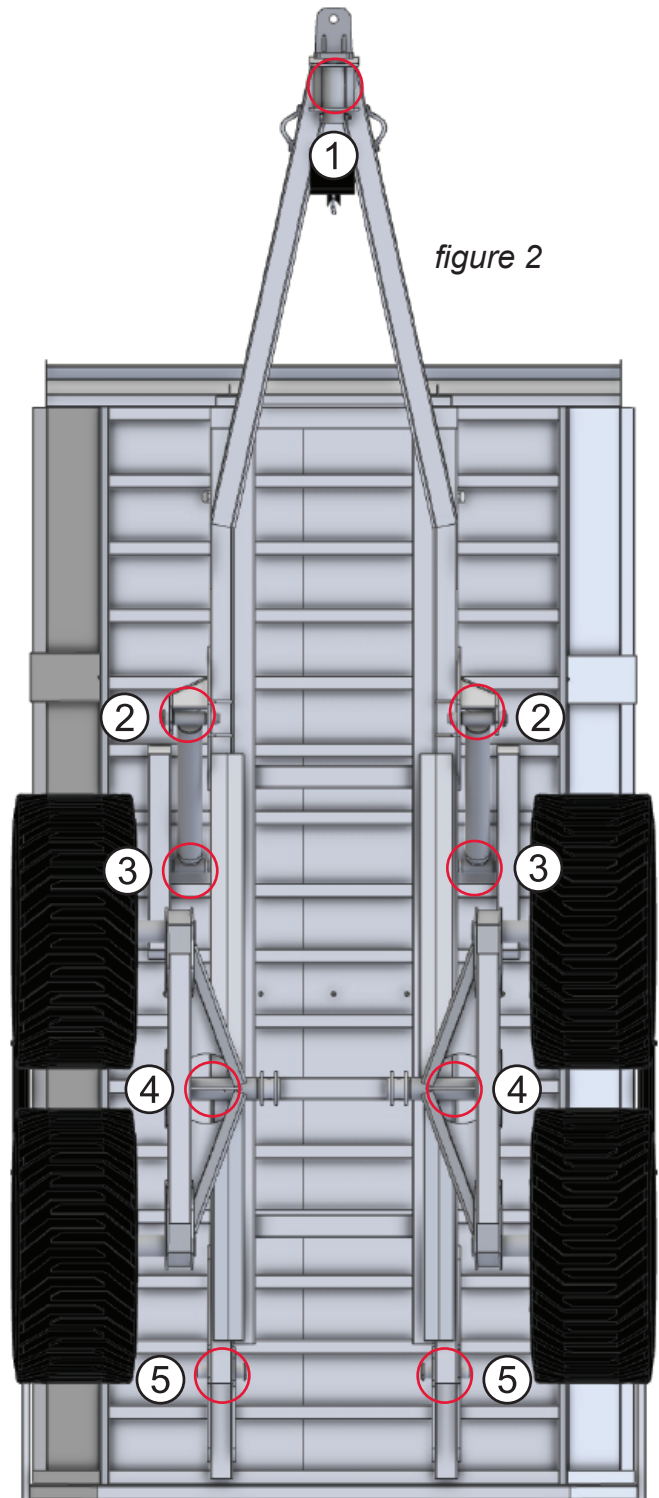
The following is a diagram showing all the grease points on your machine (see *figure 2*). All grease points have been numbered so that they can easily be located on the machine. As you can see all of these grease points are located under the machine, so it is beneficial to invest in a roller seat or creeper for easier access. It is highly recommended that you grease all of the points weekly, or no less than bi-weekly.

GREASE POINT LOCATIONS:

1. Swivel Hitch
2. Lower Cylinder Pins
3. Upper Cylinder Pins
4. Tandem Pivot
5. Rear Box Pivot

Agricultural machinery often operates at a wide range of temperatures in a variety of ever-changing environmental conditions. In order to combat these factors and successfully prevent premature wear, corrosion and total machine or part failure, this trailer requires the use of heavy-duty, high lithium grease lubricants to properly protect the entire system.

Failure to do so can result in costly bearing or component failures, or worse, major safety issues.



PARTS BREAKDOWN

To replace parts please contact Weberlane's Parts Department with your model's serial number for exact parts. Rear lighting on this series is optional therefor it is not included in the Parts Breakdown section. If you need to replace any lighting, please contact Weberlane's Parts Department.

Note: Trailer should **ALWAYS** be on level ground unless specified differently.

SWIVEL CLEVIS:

In order to replace this part you must (See *figures 3-4*):

1. Ensure all machinery is turned off
2. Remove 3/4" nut and 3/4" x 5" bolt
3. Remove Swivel Clevis
4. Slide in replacement Swivel Clevis
5. Reattach nut and bolt
6. Tighten firmly

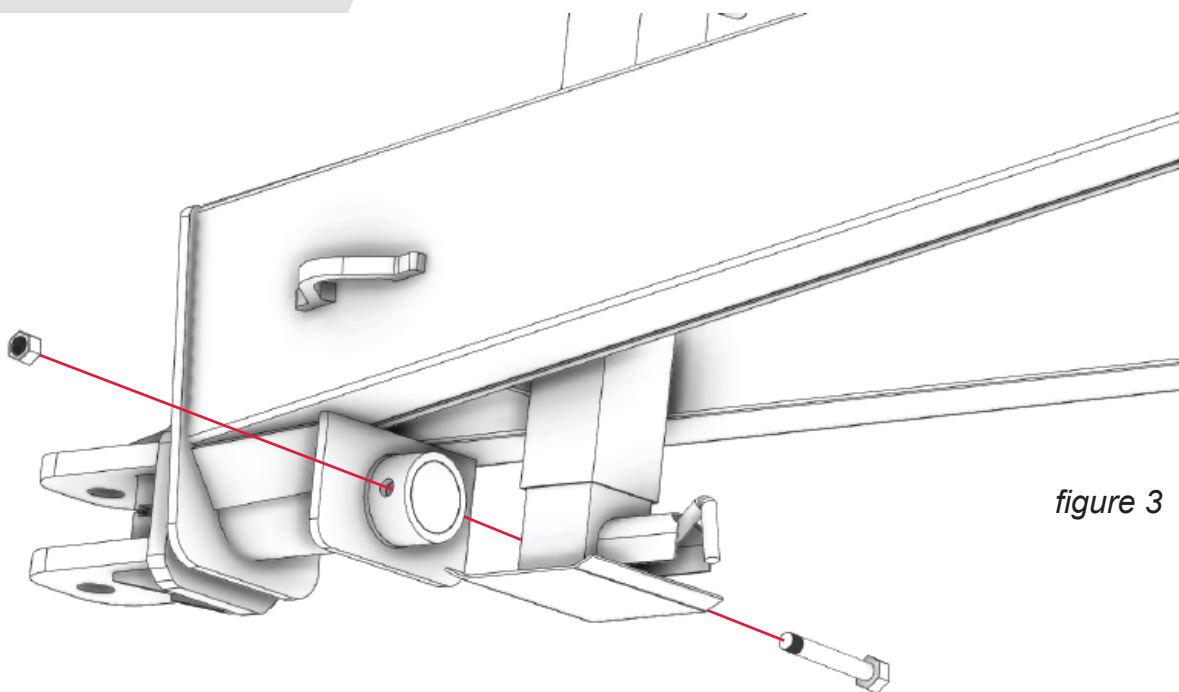


figure 3

PARTS BREAKDOWN CONT.

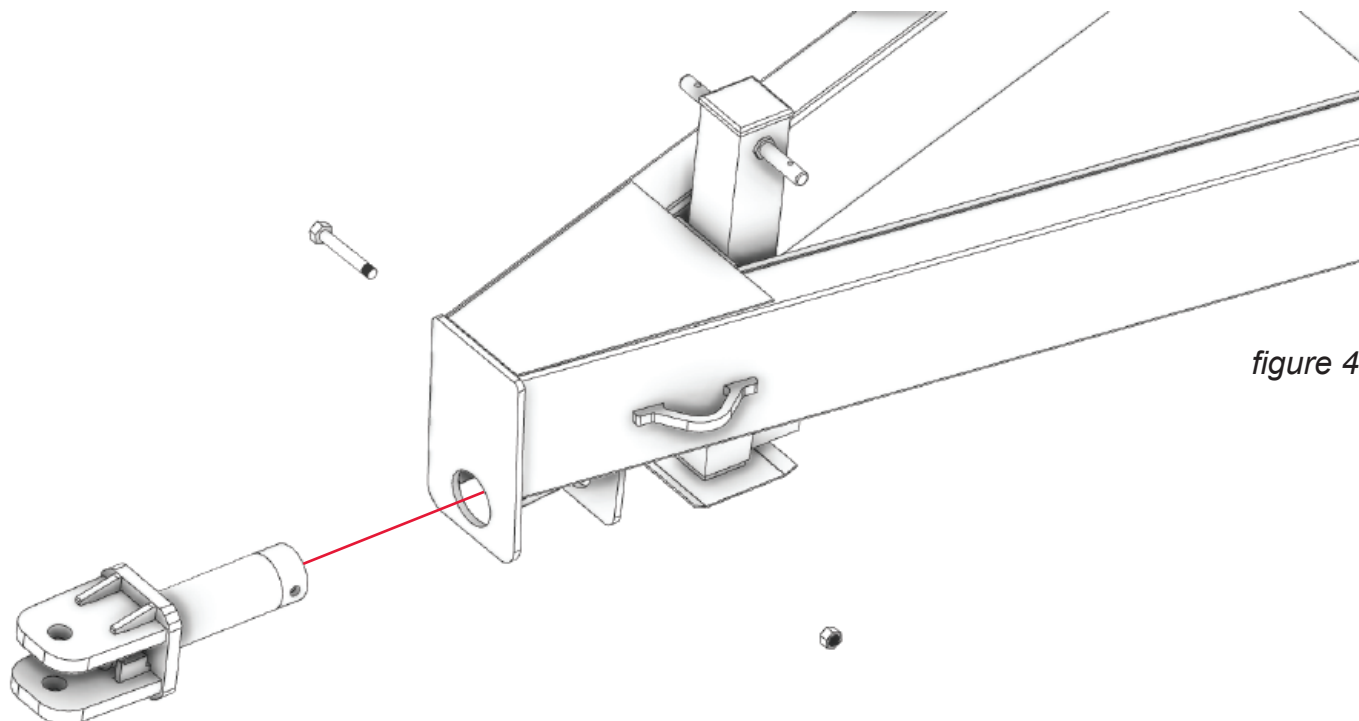


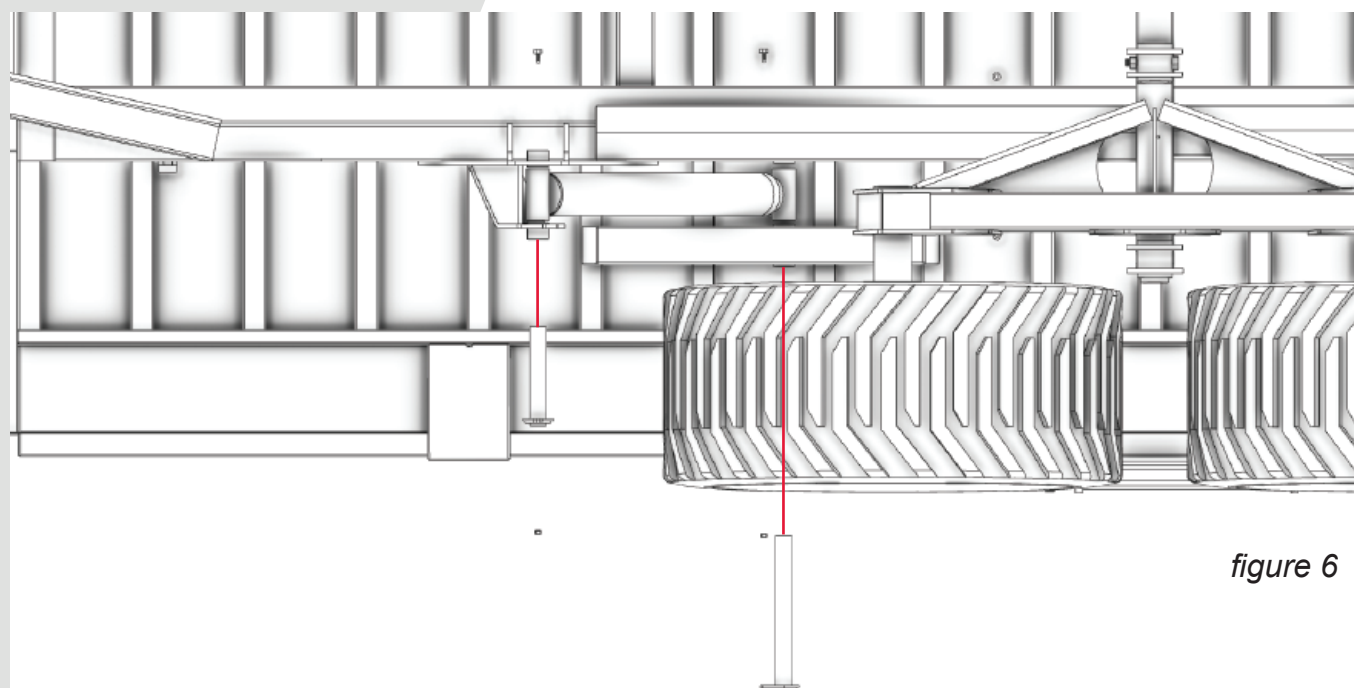
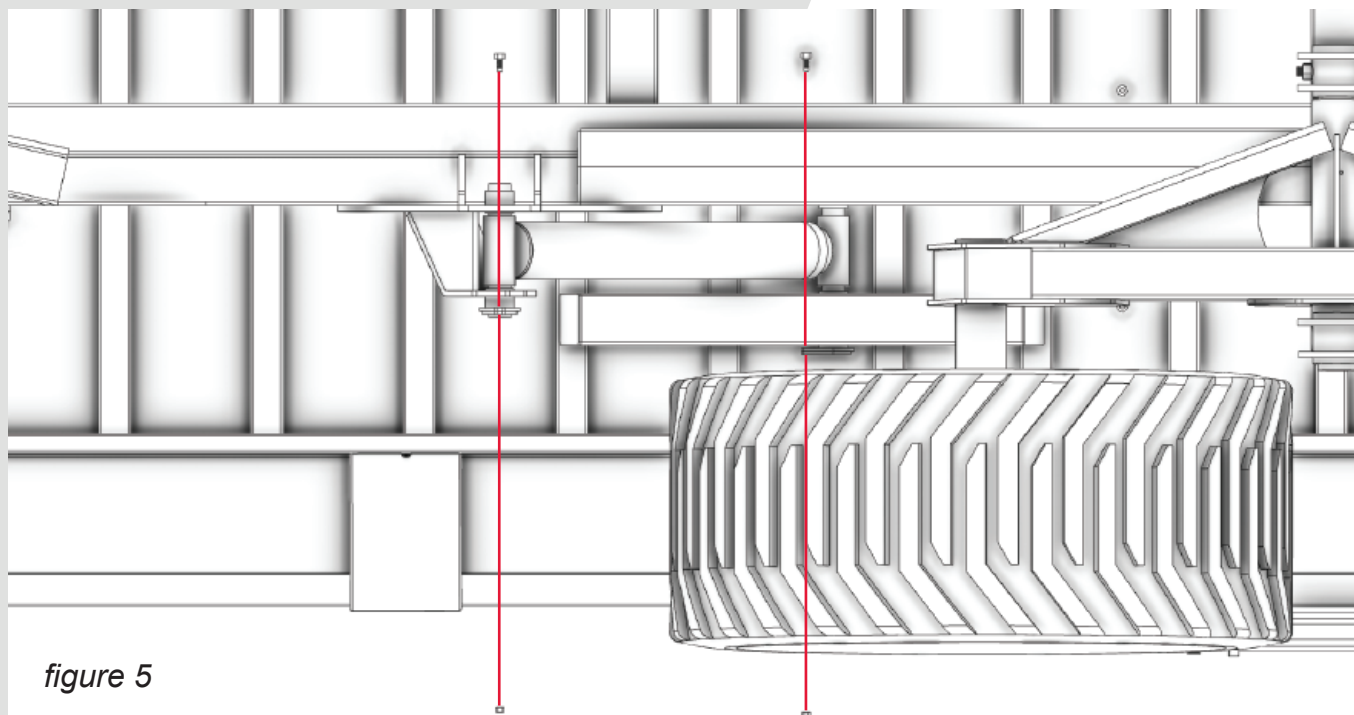
figure 4

LIFT CYLINDERS:

In order to replace this part you must (See *figures 5-7*):

1. Ensure all machinery is turned off
2. Ensure the trailers box is not in a tilted position
3. Remove 3/8" nuts and 3/8" x 3/4" bolts (2 sets)
4. Slide out both 1-3/4" x 10-1/2" keeper plate pins
5. Remove Lift Cylinder
6. Replace Lift Cylinder
7. Slide both keeper plate pins back in
8. Reattach nuts and bolts
9. Tighten firmly
10. Repeat the exact same steps for the other side of machine

PARTS BREAKDOWN CONT.



PARTS BREAKDOWN CONT.

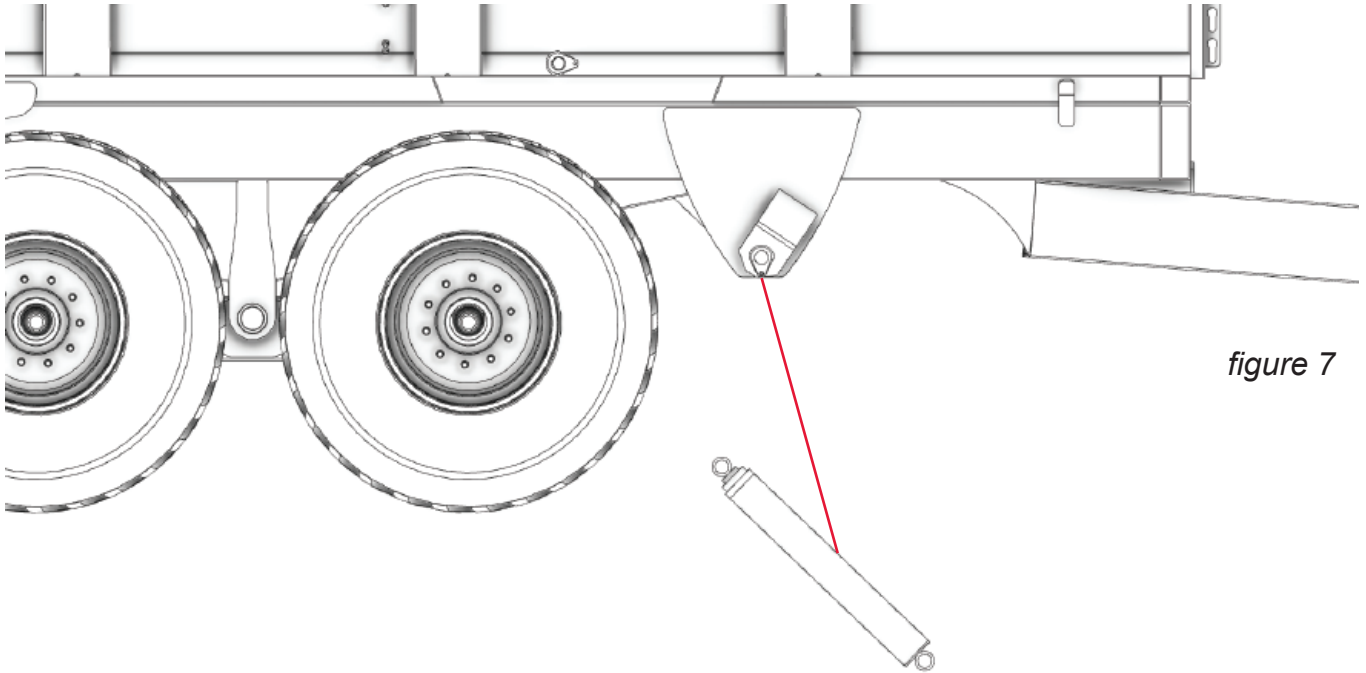


figure 7

TANDEMS:

In order to replace this part you must (See *figures 8-11*):

1. Ensure all machinery is turned off
2. Safely hook up trailer to crane allowing trailer to be suspended
3. Remove all tires(4) from the Tandems. Simply remove lug nuts and pull the tires off one-by-one
4. Remove 3/4" nut and 3/4" x 5" bolt from shaft (1 per Tandem)
5. Remove Tandems
6. Replace Tandems
7. Slide bolts back into the shafts
8. Reattach nuts
9. Tighten firmly
10. Position tires back onto the hub
11. Reattach lug nuts
12. Tighten Firmly

* Tire tread shown on *figures* is not an accurate depiction of the tread on your physical model but the sizing is accurate.

PARTS BREAKDOWN CONT.

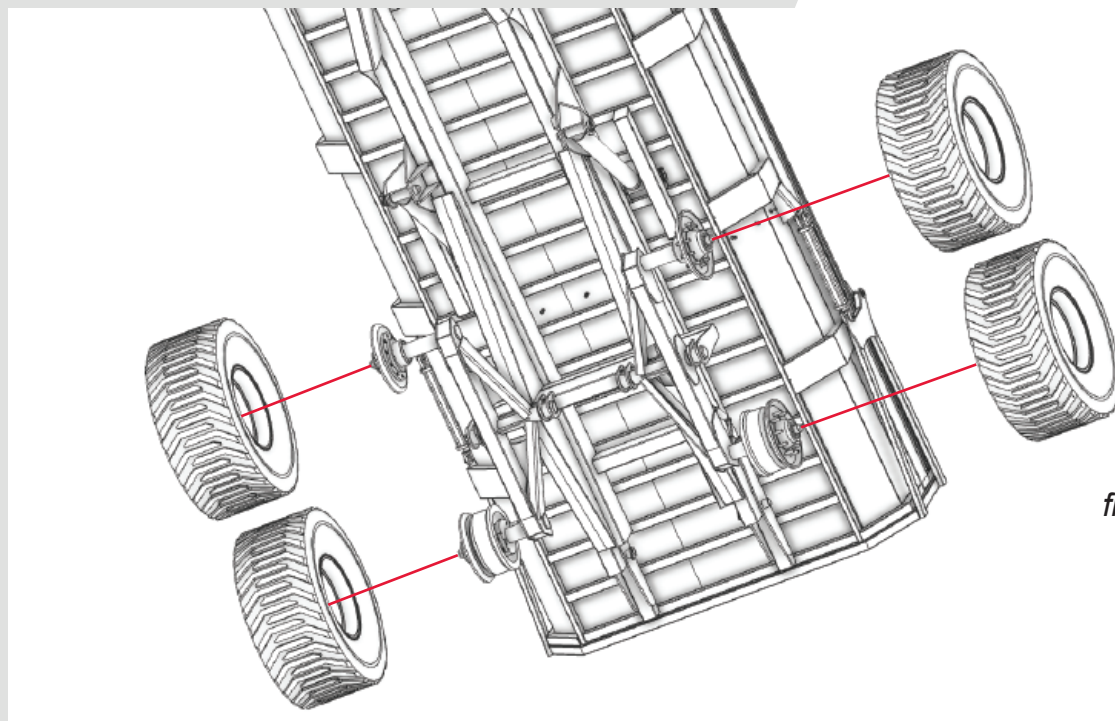


figure 8

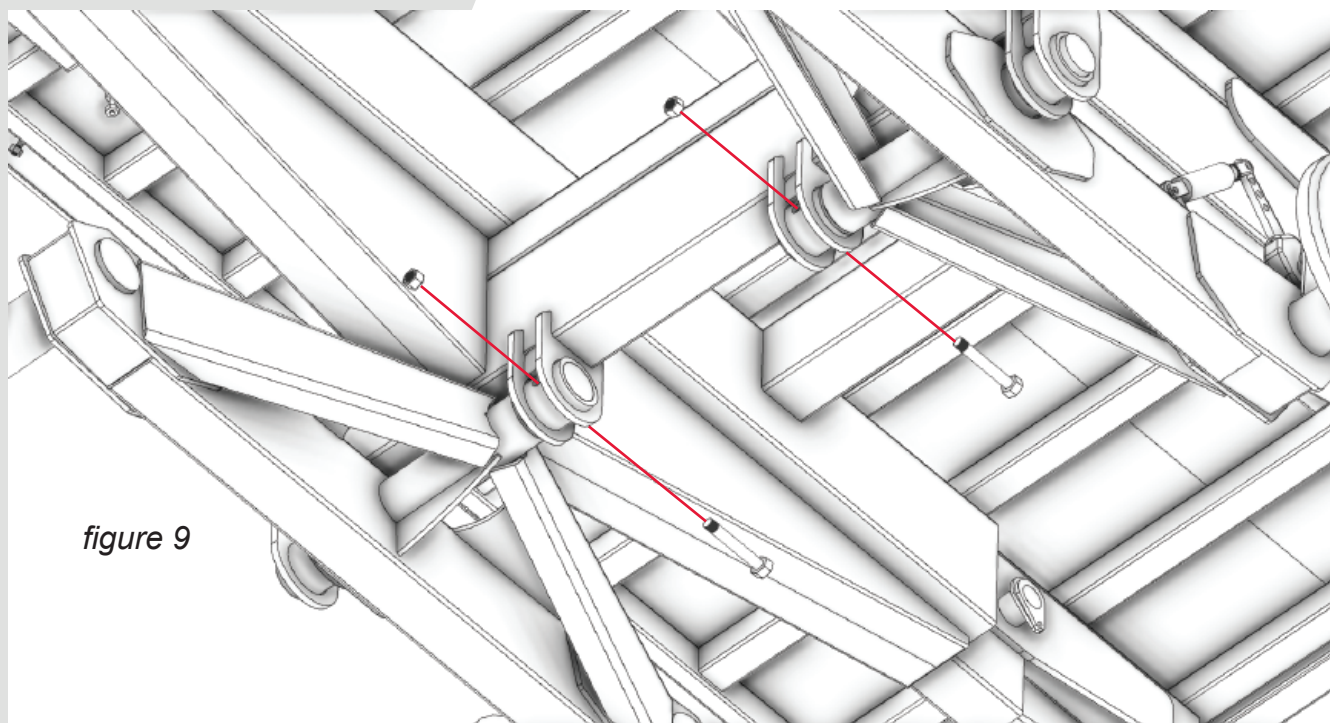


figure 9

PARTS BREAKDOWN CONT.

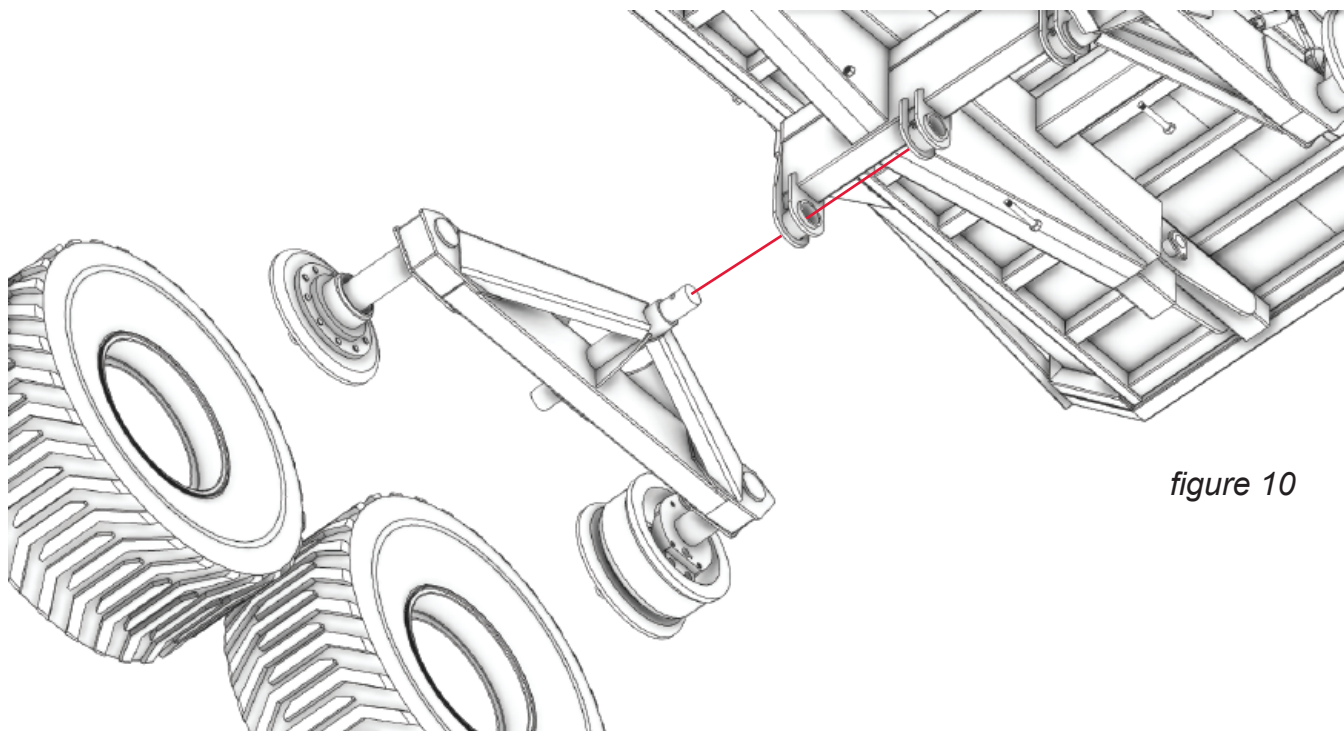


figure 10

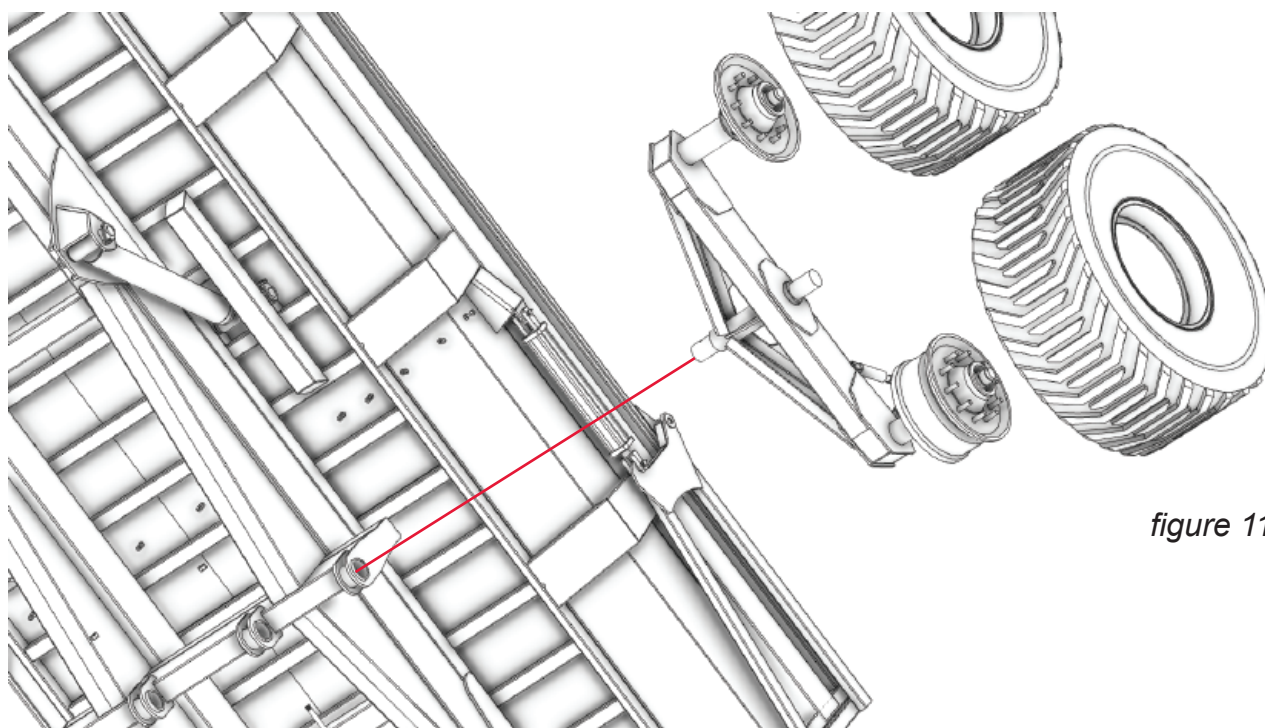


figure 11

PARTS BREAKDOWN CONT.

TAILGATE CYLINDERS:

In order to replace this part you must (See *figures 12-14*):

1. Ensure all machinery is turned off
2. Ensure the tailgate is in a closed position
3. Slide out both 3/16" x 2" cotter pins
4. Slide out both 1" x 3-1/2" cylinder pins
5. Remove Tailgate Cylinder
6. Replace Tailgate Cylinder
7. Slide cylinder pins back in
8. Slide cotter pins back in
9. Repeat these steps on other side of the trailer in order to remove second Tailgate Cylinder

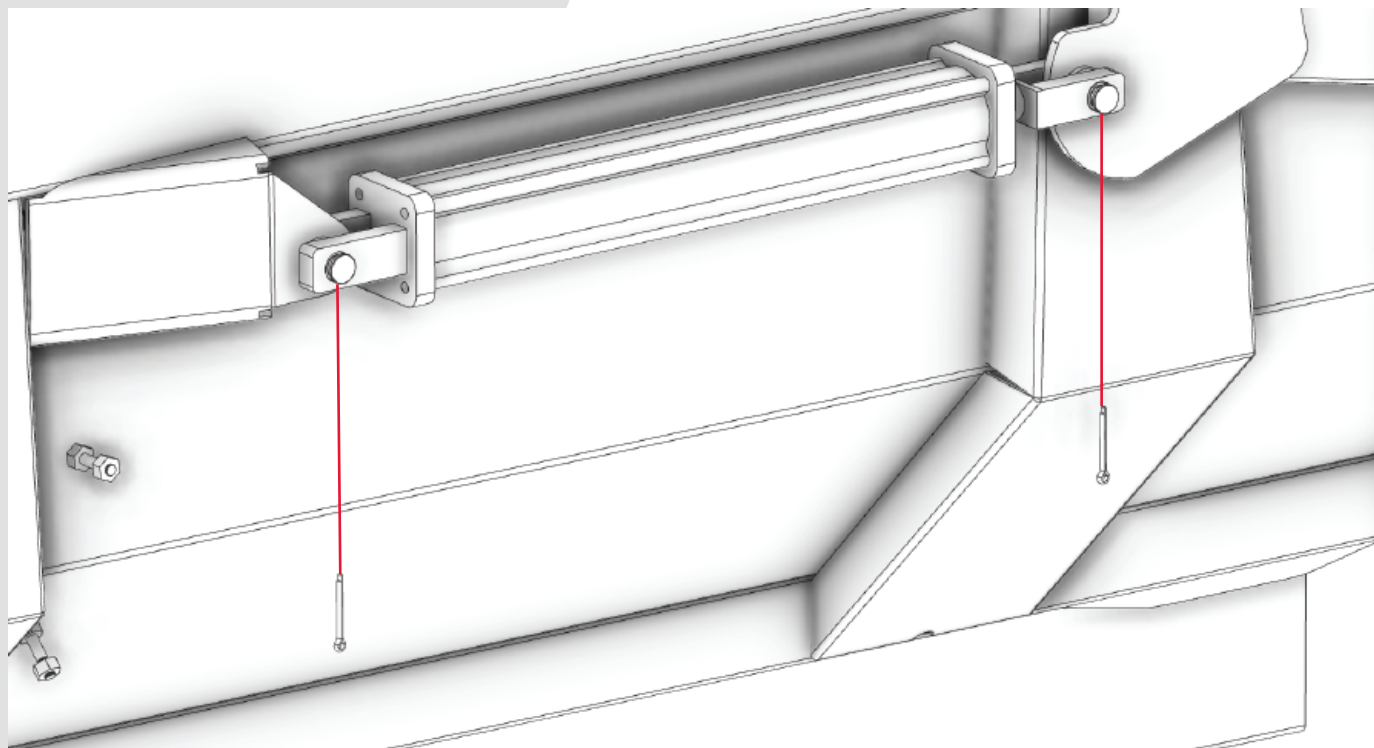
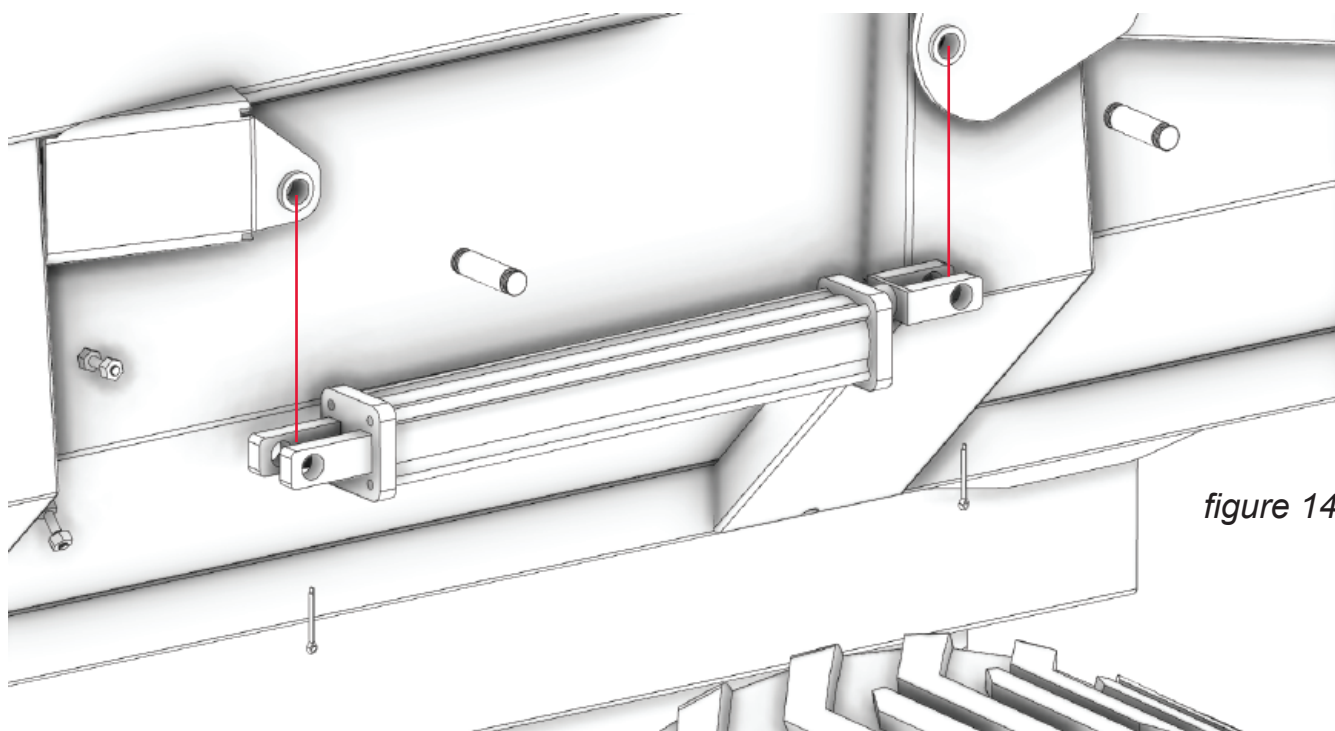
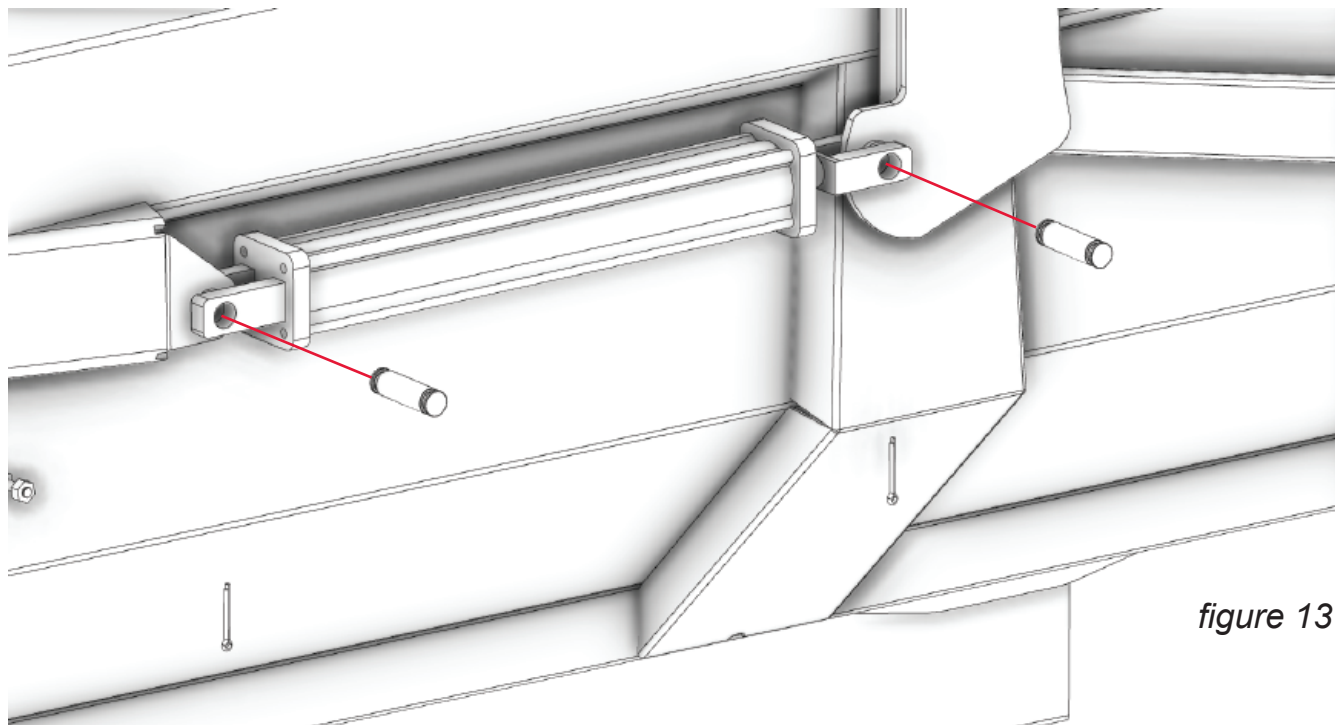


figure 12

PARTS BREAKDOWN CONT.



PARTS BREAKDOWN CONT.

16K LEFT BRAKE HUB & DRUM:

To replace parts (See *figures 15-16*). Part numbers may not be all inclusive depending on year, make and model. Contact Weberlane's Parts Department with your model's serial number for exact parts:

(Zoom in for greater detail)

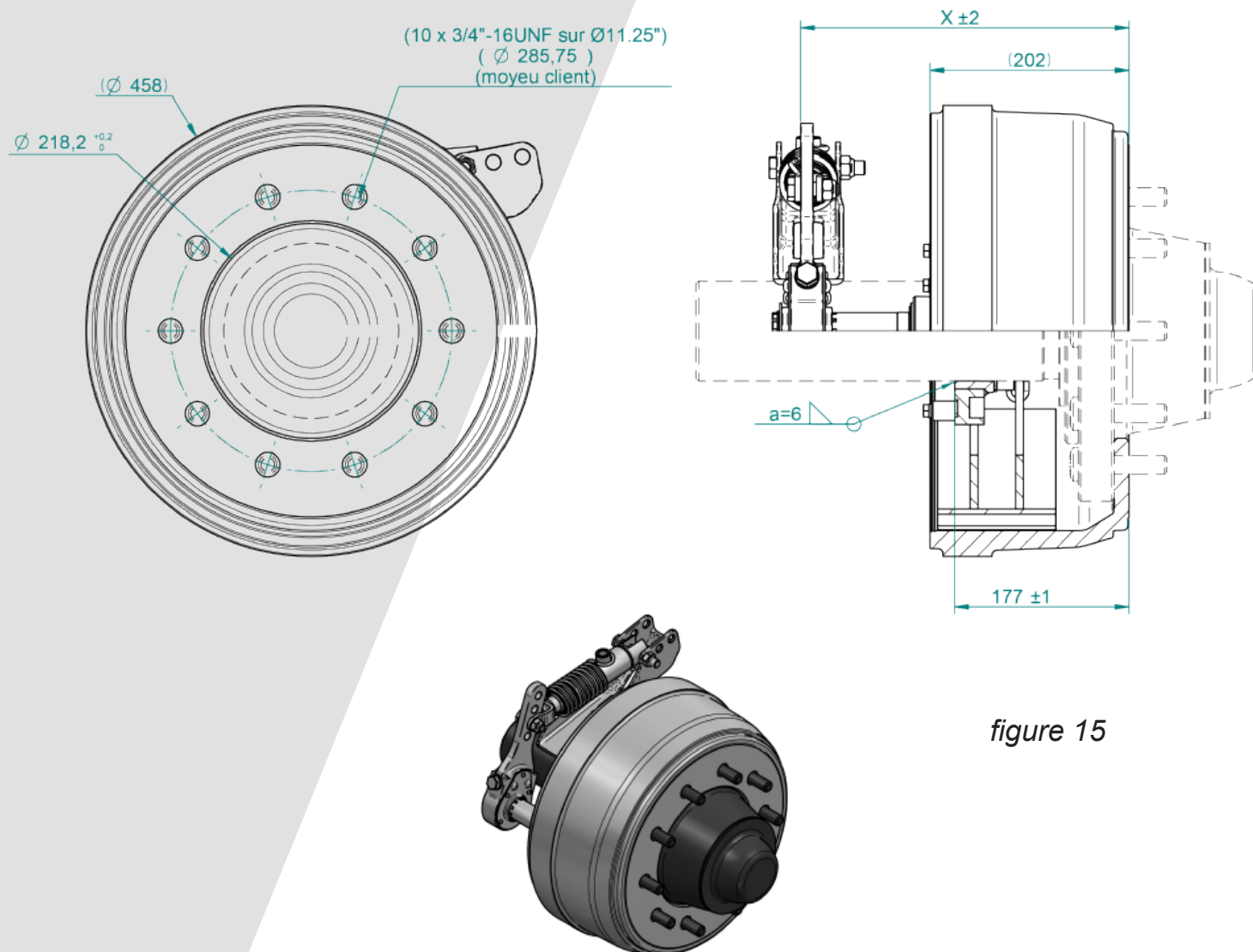


figure 15

PARTS BREAKDOWN CONT.

16K LEFT BRAKE HUB & DRUM CONT.

L CAME	X	REF (ghe)
189	334	M223751110
250	395	M223751130
518	663	M223751190
618	763	M223751210
680	825	M223751240
735	880	M223700601

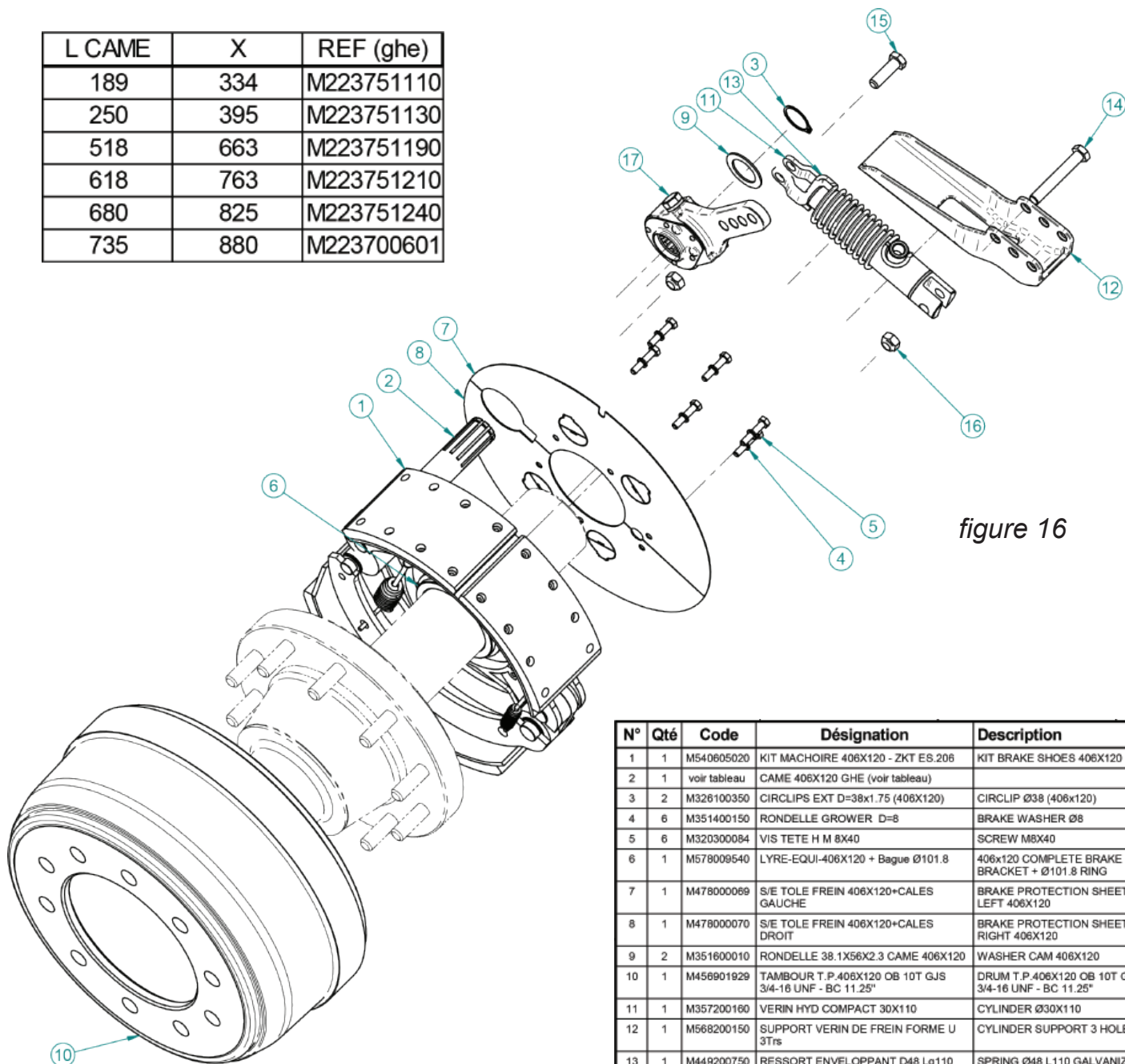


figure 16

N°	Qté	Code	Désignation	Description
1	1	M540605020	KIT MACHOIRE 406X120 - ZKT ES.206	KIT BRAKE SHOES 406X120
2	1	voir tableau	CAME 406X120 GHE (voir tableau)	
3	2	M326100350	CIRCLIPS EXT D=38x1.75 (406X120)	CIRCLIP Ø38 (406x120)
4	6	M351400150	RONDELLE GROWER D=8	BRAKE WASHER Ø8
5	6	M320300084	VIS TETE H M 8X40	SCREW M8X40
6	1	M578009540	LYRE-EQUI-406X120 + Bague Ø101.8	406x120 COMPLETE BRAKE BRACKET + Ø101.8 RING
7	1	M478000069	S/E TOLE FREIN 406X120+CALES GAUCHE	BRAKE PROTECTION SHEET LEFT 406X120
8	1	M478000070	S/E TOLE FREIN 406X120+CALES DROIT	BRAKE PROTECTION SHEET RIGHT 406X120
9	2	M351600010	RONDELLE 38.1X56X2.3 CAME 406X120	WASHER CAM 406X120
10	1	M456901929	TAMBOUR T.P.406X120 OB 10T GJS 3/4-16 UNF - BC 11.25"	DRUM T.P.406X120 OB 10T GJS 3/4-16 UNF - BC 11.25"
11	1	M357200160	VERIN HYD COMPACT 30X110	CYLINDER Ø30X110
12	1	M568200150	SUPPORT VERIN DE FREIN FORME U 3Trs	CYLINDER SUPPORT 3 HOLES
13	1	M449200750	RESSORT ENVELOPPANT D48 Lg110 GALVA	SPRING Ø48 L110 GALVANIZED
14	1	M320301250	VIS TETE H M14X90 ZN CL8.8	SCREW M14X90 8.8
15	1	M320301100	VIS TETE H M14X45 ZINGUE CL8.8	SCREW M14X45 CL8.8
16	2	M320200025	ECROU NYLSTOP M14 ZN CL8	NYLSTOP NUTS M14
17	1	M318200800	BIELLETTTE BRM 10 CRANS 4T 127 A 203	SLACK ADUSTER 406X120 4H 127 A 203

PARTS BREAKDOWN CONT.

16K RIGHT BRAKE HUB & DRUM:

To replace parts (See *figures 17-18*). Part numbers may not be all inclusive depending on year, make and model. Contact Weberlane's Parts Department with your model's serial number for exact parts:

(Zoom in for greater detail)

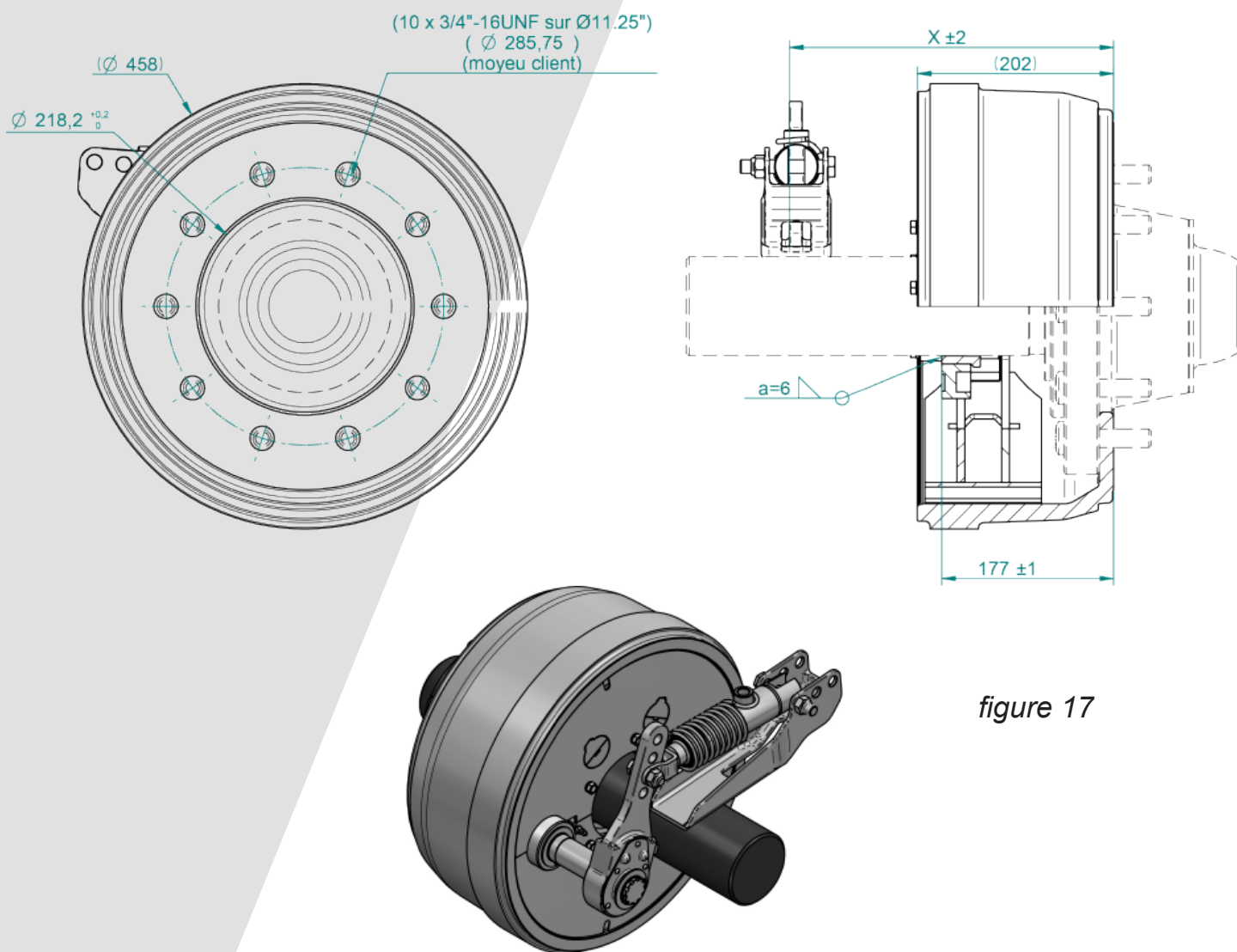


figure 17

PARTS BREAKDOWN CONT.

16K RIGHT BRAKE HUB & DRUM CONT.

L CAME	X	REF (drt)
189	334	M223751100
250	395	M223571120
518	663	M223751180
618	763	M223751200
680	825	M223751220
735	880	M223751352

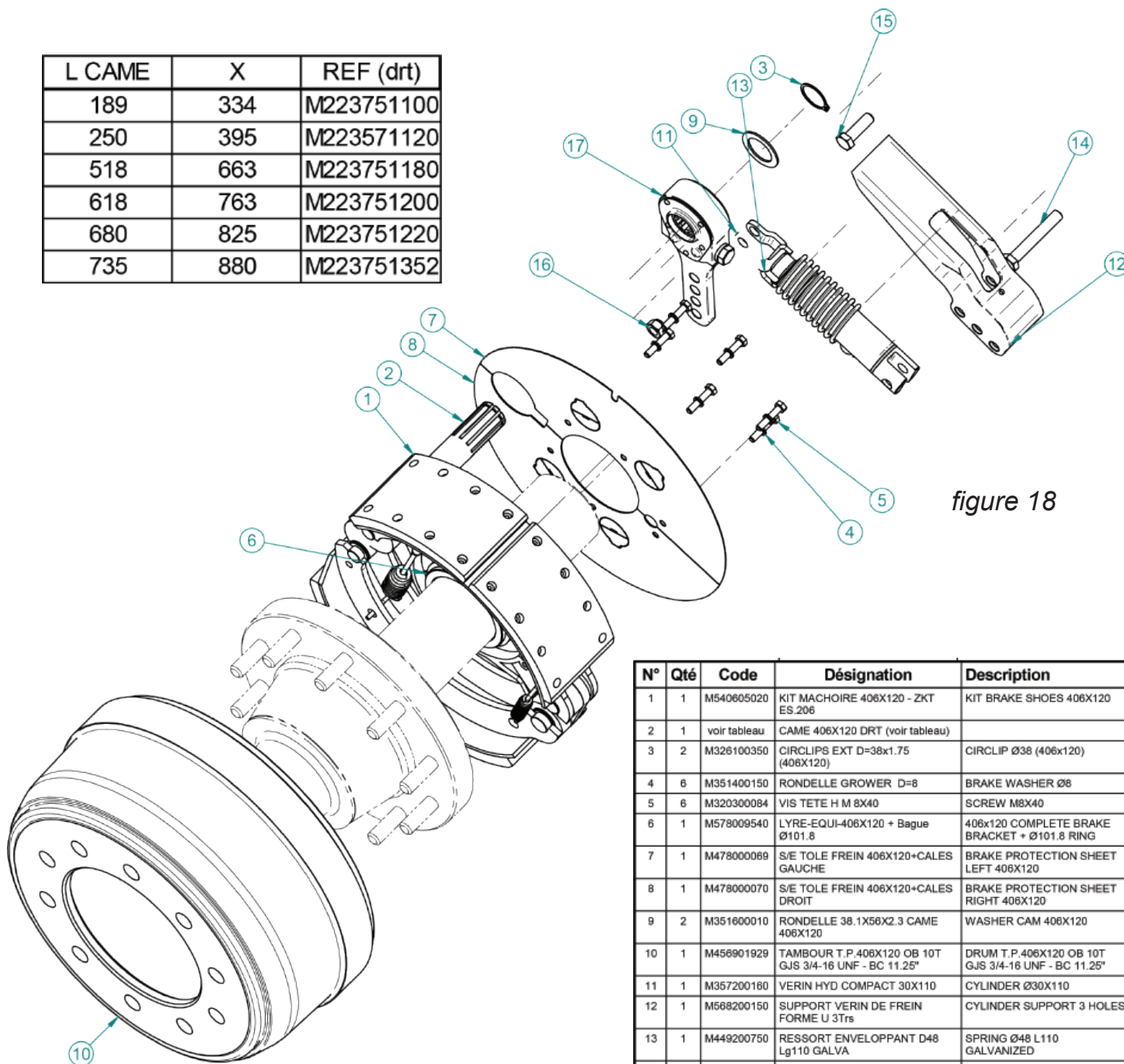


figure 18

N°	Qté	Code	Désignation	Description
1	1	M540605020	KIT MACHOIRE 406X120 - ZKT ES.206	KIT BRAKE SHOES 406X120
2	1	voir tableau	CAME 406X120 DRT (voir tableau)	
3	2	M326100350	CIRCLIPS EXT D=38x1.75 (406X120)	CIRCLIP Ø38 (406x120)
4	6	M351400150	RONDELLE GROWER D=8	BRAKE WASHER Ø8
5	6	M320300084	VIS TETE H M 8X40	SCREW M8X40
6	1	M578009540	LYRE-EQUI-406X120 + Bague Ø101.8	406x120 COMPLETE BRAKE BRACKET + Ø101.8 RING
7	1	M478000069	S/E TOLE FREIN 406X120+CALES GAUCHE	BRAKE PROTECTION SHEET LEFT 406X120
8	1	M478000070	S/E TOLE FREIN 406X120+CALES DROIT	BRAKE PROTECTION SHEET RIGHT 406X120
9	2	M351600010	RONDELLE 38.1X56X2.3 CAME 406X120	WASHER CAM 406X120
10	1	M456901929	TAMBOUR T.P.406X120 OB 10T GJS 3/4-16 UNF - BC 11.25"	DRUM T.P.406X120 OB 10T GJS 3/4-16 UNF - BC 11.25"
11	1	M357200160	VERIN HYD COMPACT 30X110	CYLINDER Ø30X110
12	1	M568200150	SUPPORT VERIN DE FREIN FORME U 3Trs	CYLINDER SUPPORT 3 HOLES
13	1	M449200750	RESSORT ENVELOPPANT D48 Lg110 GALVA	SPRING Ø48 L110 GALVANIZED
14	1	M320301250	VIS TETE H M14X90 ZN CL8.8	SCREW M14X90 8.8
15	1	M320301100	VIS TETE H M14X45 ZINGUE CL8.8	SCREW M14X45 CL8.8
16	2	M320200025	ECROU NYLSTOP M14 ZN CL8	NYLSTOP NUTS M14
17	1	M318200800	BIELLETTTE BRM 10 CRANS 4T 127 A 203	SLACK ADUSTER 406X120 4H 127 A 203

PARTS BREAKDOWN CONT.

25K IDLER HUB:

To replace parts (See *figure 19*). Part numbers may not be all inclusive depending on year, make and model. Contact Weberlane's Parts Department with your model's serial number for exact parts:

(Zoom in for greater detail)

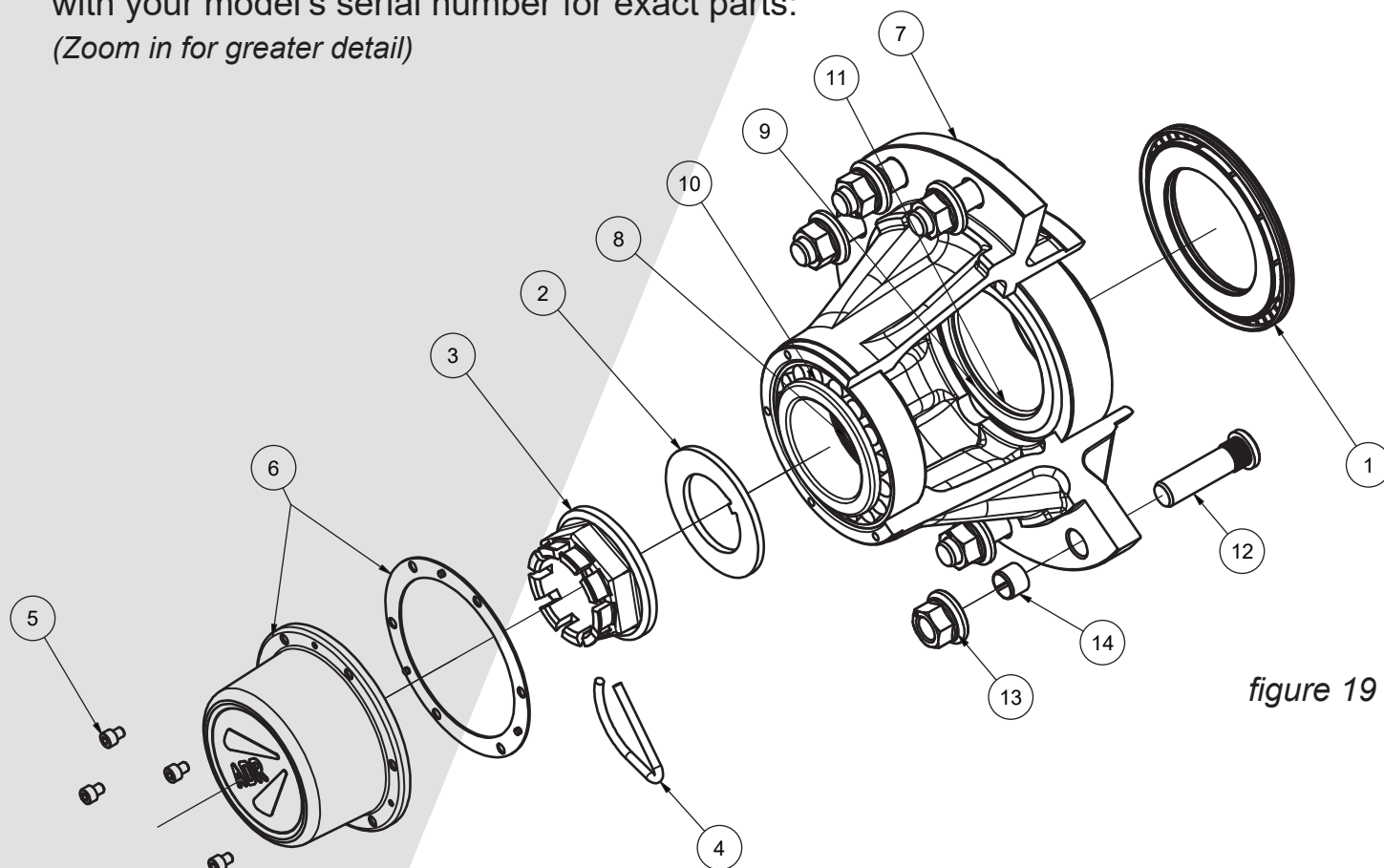


figure 19

14	2	57H222	SLEEVE FOR STUD M22 TWIN WHEEL
13	10	57322B3	STUD NUT M22X1,50 WR32 INDUSTRIAL TYPE GEOMET
12	10	57122B1	STUD M22x1,50 L090 TWIN WHEEL
11	1	59133122	33122 110 180 56
10	1	59133118	33118 090 150 45
9	1	5511801	NILOS
8	1	5531391	NILOS GREASE SEAL 139/092 FOR 33118
7	1	61L1ZA001	HUB H10 22 150-180 280-335
6	1	56115009	CAP 150 BOLT ON ADR WITH GASKET
5	6	96308A0101	SOCKET HEAD SCREW
4	1	58214	SPRING PIN FOR NUT M70 9 NOTCH
3	1	57570D2	CROWN NUT M70X2,00 WR90 H49 9 NOTCH
2	1	57B7002	LOCK WASHER FOR M70 PERIFERIA VF ZA
1	1	5441801	MACHINED RING FOR GREASE SEAL 5441801
ITEM	QTY	PART NUMBER	DESCRIPTION
Parts List			

PARTS BREAKDOWN CONT.

25K DRUM BRAKE:

To replace parts (See *figure 20*). Part numbers may not be all inclusive depending on year, make and model. Contact Weberlane’s Parts Department with your model’s serial number for exact parts:

(Zoom in for greater detail)

SUPPLY NOT ASSEMBLED EXCEPT FOR COMPONENTS IN DETAIL "A"

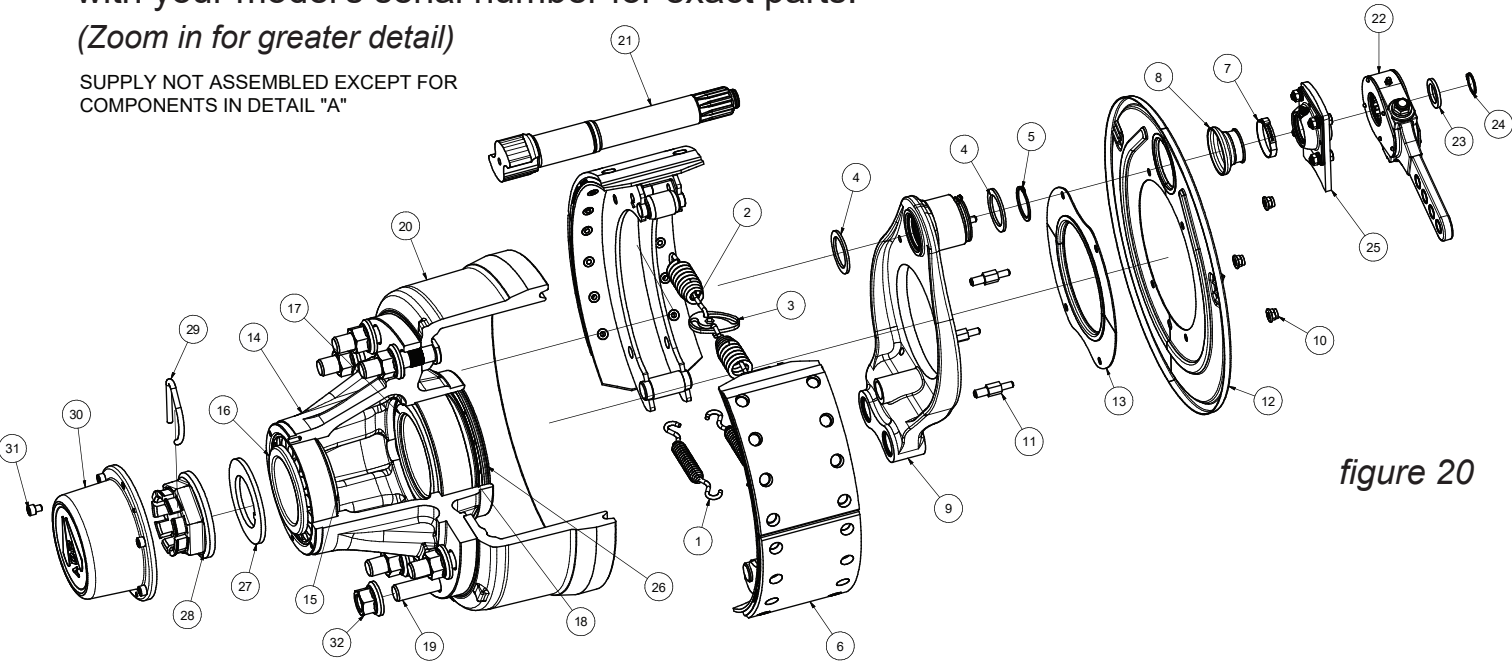
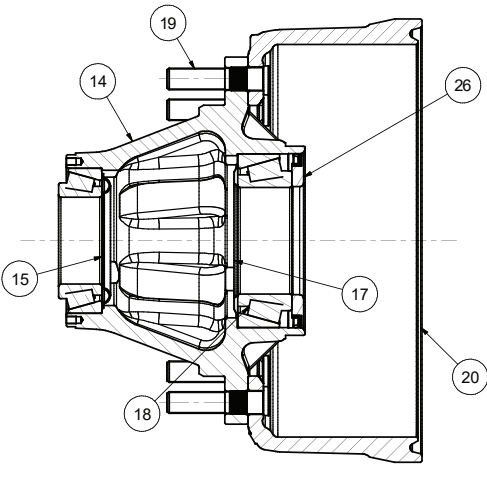


figure 20

DETAIL "A" COMPONENTS SUPPLIED ALREADY ASSEMBLED



		PARTS LIST	
ITEM	QTY	PART NUMBER	DESCRIPTION
1	2	738129	SPRING BRAKE 412E 4218E
2	2	738128	SPRING BRAKE 412E 4218E
3	1	736XC02	SPRING EXTENDER 412E 414E 4218E 5218S
4	2	73G01	WASHER BRAKE 412E 4218E
5	1	58514	SEEGER D042 DIN471 FOR SHAFT
6	2	732WC03	BRAKE SHOE 406X140 414E
7	1	98E01	HOSE CLAMP FOR RUBBER CAPS BRAKE 4218S 4220S
8	1	53A11	RUBBER CAP FOR CAM SHAFT Ø40 BRAKE 412E 414E 4218E 4220E
9	1	742XC1621	SPYDER 42-40 R6 INCH ROUND
10	4	97708A1	SELF LOCKING NUT M08X1,25 THIN WITH FLANGE ISO 7043 ZINC PLATED
11	4	57708A6	SPACER SPYDER 414E
12	1	743WC0002	PROTECTION PLATE 412E 414E ALL PURPOSE BARE
13	2	7471621	PROTECTION WITH GAKSET R6 INCH 412E 414E 4218E 4220E
14	1	61L1ZA001	HUB H10 22 150-180 280-335
15	1	5531391	NILOS GREASE SEAL 139/092 FOR 33118
16	1	59133118	33118 090 150 45
17	1	5511801	NILOS
18	1	59133122	33122 110 180 56
19	10	57122B8	STUD M22X1,50 L106 HUB AND DRUM TWIN WHEEL
20	1	66LWA1005	DRUM 406X120 H10 22 335-280
21	1	75Q4062005	CAM SHAFT D40 B0275 S LEFT SAE 1,5" Z=10 412E 4218E
22	1	7621603	SLACK ADJUSTER SAE 1,5" Z=10
23	1	9812601	WASHER M26 D026 D039 TK 4,0 UNI 1749 ZINC PLATED
24	1	58508	SEEGER D025 DIN471 FOR SHAFT
25	1	74417503	CAMSHAFT SUPP R6 INCH ROUND 40-42 D40 L055
26	1	5441801	INDUSTRIAL GREASE SEAL
27	1	57B7002	LOCK WASHER FOR M70 PERIFERIA VF ZA
28	1	57570D2	CROWN NUT M70X2,00 WR90 H49
29	1	58214	SPRING PIN FOR NUT M70 9 NOTCH
30	1	56115003	CAP 150 BOLT ON ADR WITH GASKET
31	6	96308A0101	SOCKET HEAD SCREW
32	10	57322B3	STUD NUT M22X1,50 WR32 INDUSTRIAL TYPE

TIRE MAINTENANCE

Regular agriculture tire maintenance can extend a tire's service life by catching minor damage so you can correct it before it becomes irreversible. There are several key elements you should check for when inspecting your tires:

1. Cracks, cuts, bulges, or stubble damage
2. Tread depth
3. Ballast or stability
4. Proper inflation

When you proactively maintain your tires and have them checked regularly, you can save a great deal of time and money. Preventative maintenance is essential for maximizing your tire's life expectancy and uptime during the busy season.

Rolling Circumference & SLR values are at rated Load and inflation pressure. These values may vary at different Load and pressure condition.

FL 630 or 710/40-R-22.5 AGRICULTURAL TIRE:

SIZE	LI/SS	RIM REC	SW	OD	SLR	RC	
710/40-R-22.5	161 D/172 A8	AG 24.00	28.6	44.9	20.2	137.4	TL



TIRE DETAILS:

The FL 630 is suitable for trailers, tankers and spreaders. Thanks to its reinforced bead and the particular tread design, it is the ideal tire for multipurpose use on any kind of land or on the road. The FL 630 stands for extraordinarily reduced soil compaction.

TIRE MAINTENANCE CONT.

FL 630 SUPER or 560/60-R-22.5 AGRICULTURAL TIRE:

SIZE	LI/SS	RIM REC	SW	OD	SLR	RC	TYPE
560/60-R-22.5	161 D	AG 16.00	21.4	49	21.6	149	TL



TIRE DETAILS:

The FL 630 SUPER is a flotation tire suitable for field and road applications with trailers, tankers and spreaders. Its resistant structure provides excellent traction and perfect grip even in bends and when maneuvering, while a reinforced bead and steel belts ensure enhanced durability.

FL 635 or 750/45-R-22.5 AGRICULTURAL TIRE:

SIZE	LI/SS	RIM REC	SW	OD	SLR	RC	TYPE
750/45-R-22.5	168 D	AG 24.00	29.7	48.1	21.9	150	TL



TIRE DETAILS:

FL 635 is a radial flotation tire suitable for both road and field usage. The special block pattern has been designed for hay baler applications. FL 635 ensures a great pressure distribution on the ground across the footprint and drastically reduces soil compaction to preserve the value of the crops. The tire ensures great self-cleaning properties, durability and traction along with excellent speed features.

TIRE MAINTENANCE CONT.

FL 630 ULTRA or 800/45-R-26.5 AGRICULTURAL TIRE:

SIZE	LI/SS	RIM REC	SW	OD	SLR	RC	TYPE
800/45-R-25.5	174 D/184 A8	AG 28.00	32.6	54.8	24.3	166.9	TL



TIRE DETAILS:

FL 630 ULTRA is suitable for trailers, tankers and spreaders. Thanks to its reinforced bead and the particular tread design, it is the ideal tire for multipurpose use on any kind of land or on the road. FL 630 ULTRA stands for extraordinarily reduced soil compaction.



Weberlane

TRAILER MANUFACTURING

MANUFACTURING

Manufacturing Plant #1
(Shipping and Deliveries)
5036 Line 82, RR4
Listowel ON N4W 3G9

HEAD OFFICE

Weberlane Manufacturing
1150A Wallace Ave. N
Listowel ON N4W 1M6
(Bills and payments)

MANUFACTURING

Manufacturing Plant #2
(Shipping and Deliveries)
795 Rocher Rd,
Listowel ON N4W 0B2

For more information please contact us directly or feel free to visit our website:

Tel: (519) 291-5035 • Fax: (519) 291-5281
sales@weberlane.com

W W W . W E B E R L A N E . C O M